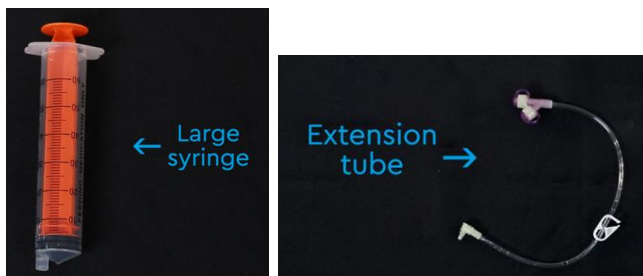


## Venting a G-tube

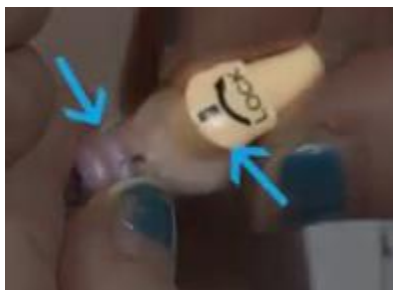
1. Wash your hands and gather supplies



2. Prime the extension tube with water



3. Attach the extension tube to the G-tube



4. Attach the open syringe to extension tube and unclamp the tube



5. Allow the air to come up through the tube.



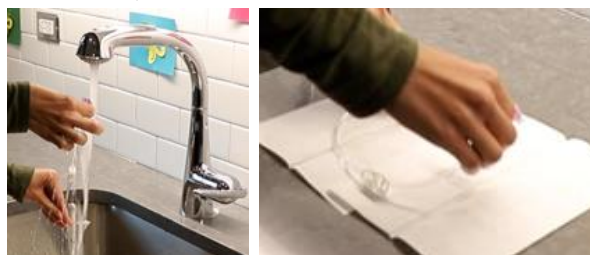
6. You may hear air come up like a burp or fluid may fill the syringe, which is okay. Just be sure to let it all drain back in.



7. Clamp extension and take off the syringe

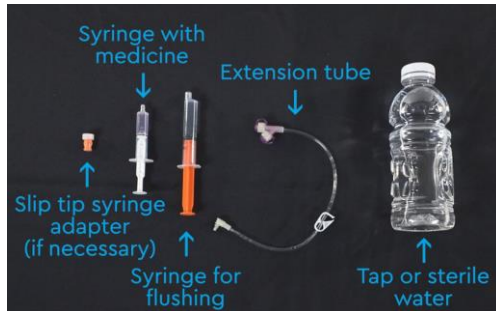


8. If you are done using the extension tube, remove it, rinse it well

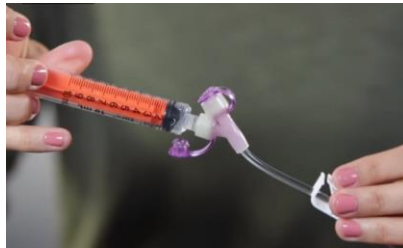


## Giving Medicine in a G-Tube

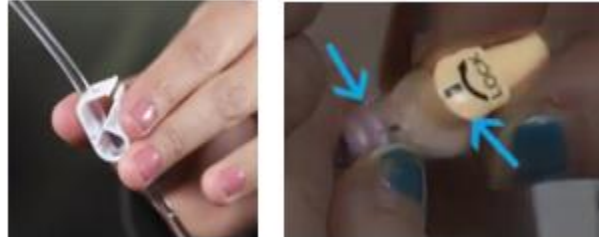
1. Wash your hands and gather your supplies



2. Prime the extension with water unless it is already connected and primed



3. Clamp and attach the extension to the G-tube



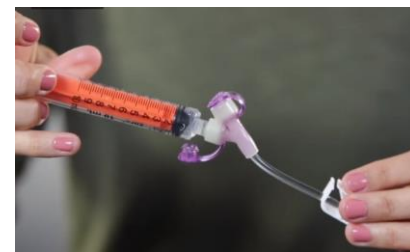
4. Attach the medicine to the extension, unclamp, push in all the medicine



5. Clamp the tube



6. Flush with the tube with water, your nurse can tell you how much to flush with



7. If you are done using the extension tube, remove it, rinse it well

